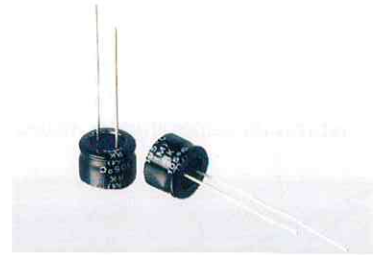


MBP Series 微型铝电解电容器 双极性品

Miniature Size and Bi-polarized Aluminum Electrolytic Capacitor of Radial Lead Type

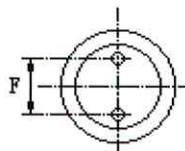
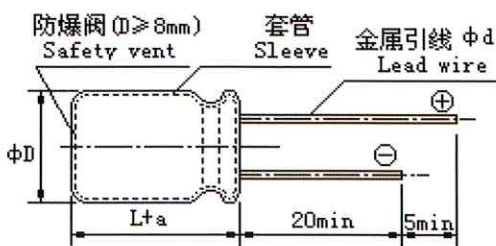
- 袖珍型 ● 高度为 5mm ● 双极性
- 性能稳定，可靠性高。
- Miniature size ● 5mm height ● No-polarized
- High stability and reliability



主要技术性能 Specifications

| | | | | | | | |
|---|---|--|------|------|------|------|------|
| 使用温度范围 Operating temperature range | -40 ~ +85°C | | | | | | |
| 额定电压范围 Rated voltage range | 6.3 ~ 50V DC | | | | | | |
| 标称电容量允许偏差 Capacitance tolerance | ± 20% (120Hz, 20°C) | | | | | | |
| 漏电流(20°C) Leakage current | I ≤ 0.03CV(μA) 或 10 μA 取较大者 Less than 0.03CV or 10 μA Whichever is greater | | | | | | |
| 损耗正切值 (120Hz 20°C) Dissipation Factor | W.V. | 6.3 | 10 | 16 | 25 | 35 | 50 |
| | tg δ | 0.24 | 0.20 | 0.20 | 0.20 | 0.20 | 0.20 |
| 温度特性 (120Hz) Temperature characteristics Impedance ratio at 120Hz | WV | 6.3 | 10 | 16 | 25 | 35 | 50 |
| | Z _{-25°C} /Z _{+20°C} | 6 | 4 | 4 | 3 | 2 | 2 |
| | Z _{-40°C} /Z _{+20°C} | 12 | 10 | 8 | 6 | 4 | 4 |
| 耐久性 Load life | +85°C, 施加额定电压 1000 小时后 (每 250 小时换向一次) 电容器应满足下列要求 After 1000 hours application of rated voltage at +85°C (with the polarity inverted every 250 hours) the capacitor shall meet the following requirement. | | | | | | |
| | 电容量变化率 Capacitance change | ≤ ± 20% 初始测量值 ≤ ± 20% of Initial measured value | | | | | |
| | 漏电流值 Leakage | ≤ 规定值 ≤ The specified value | | | | | |
| | 损耗角正切值 Dissipation factor | ≤ 2 倍规定值 ≤ 200% of the specified value | | | | | |
| 高温贮存 Shelf life | 85°C, 500 小时, 恢复 16 小时后, 电容器应满足下列要求 After storage for 500 hours at +85°C and then resumed 16 hours, the capacitor shall meet the following requirement. | | | | | | |
| | 电容量变化率 Capacitance change | ≤ ± 20% 初始测量值 ≤ ± 20% of Initial measured value | | | | | |
| | 漏电流值 Leakage | ≤ 2 倍规定值 ≤ 200% of the specified value | | | | | |
| | 损耗角正切值 Dissipation factor | ≤ 2 倍规定值 ≤ 200% of the specified value | | | | | |

外形图及尺寸 Case size table



| | mm | | | |
|-----------|------|-----|-----------|----------|
| ΦD ± 0.5 | 4 | 5 | 6.3 | 8 |
| L | 5 | 5 | 5 | 5 |
| F ± 0.5 | 1.5 | 2.0 | 2.5 | 3.5(2.5) |
| Φd ± 0.05 | 0.45 | | 0.45(0.5) | |
| a | 1.0 | | | |

() is special size.

MBP Series

■ 标称电容量、额定电压、额定纹波电流及外形尺寸对应表

Nominal capacitance, rated voltage, rated ripple current and case size table

| WV mA μF | 6.3V 0J | | 10V 1A | | 16 1C | | 25V 1E | | 35V 1V | | 50V 1H | | |
|----------------|------------|------|-----------|------|----------|------|-----------|------|-----------|------|-----------|------|-----|
| | ΦD×L | I~mA | ΦD×L | I~mA | ΦD×L | I~mA | ΦD×L | I~mA | ΦD×L | I~mA | ΦD×L | I~mA | |
| 0.1 (0R1) | | | | | | | | | | | | 4×5 | 1.5 |
| 0.22 (R22) | | | | | | | | | | | | 4×5 | 2.5 |
| 0.33 (R33) | | | | | | | | | | | | 4×5 | 4.5 |
| 0.47 (R47) | | | | | | | | | | | | 4×5 | 5.5 |
| 1.0 (010) | | | | | | | | | | | | 4×5 | 10 |
| 2.2 (2R2) | | | | | | | 4×5 | 14 | 4×5 | 15 | 5×5 | 15 | 15 |
| 3.3 (3R3) | | | | | | | 5×5 | 18 | 5×5 | 20 | 5×5 | 20 | 20 |
| 4.7 (4R7) | | | | | 4×5 | 20 | 5×5 | 21 | 5×5 | 22 | 6.3×5 | 28 | 28 |
| 10 (100) | 4×5 | 20 | 4×5 | 25 | 5×5 | 25 | 6.3×5 | 30 | 6.3×5 | 33 | 6.3×5 | 40 | 40 |
| 22 (220) | 5×5 | 29 | 5×5 | 30 | 6.3×5 | 39 | 8×5 | 42 | 8×5 | 45 | 8×5 | 50 | 50 |
| 33 (330) | 6.3×5 | 38 | 6.3×5 | 43 | 8×5 | 52 | 8×5 | 56 | 8×5 | 58 | | | |
| 47 (470) | 6.3×5 | 46 | 8×5 | 60 | 8×5 | 62 | | | | | | | |
| 100 (101) | 8×5 | 66 | 8×5 | 66 | | | | | | | | | |

I~ 额定纹波电流 Rated ripple current: (mA, 85°C, 120Hz)

■ 额定纹波电流的频率系数 Frequency coefficient of rated ripple current

| Frequency 频率 | | 50Hz | 120Hz | 300Hz | 1KHz | 10KHz≤ |
|----------------|-------------|------|-------|-------|------|--------|
| Coefficient 系数 | 0.1 ~ 47 μF | 0.80 | 1.00 | 1.17 | 1.30 | 1.50 |
| | 100 μF | 0.80 | 1.00 | 1.10 | 1.15 | 1.20 |